

Saint Thomas Newsletter

All welcome - no exceptions - to worship, love, serve, and grow

Special Stewardship Edition

October 15, 2009

What good is it if the bread is changed and we are not?

The Rev. Godfrey Dickmann, O.S.D.



Giving feels good. Giving helps others. Giving also benefits your church community and the other organizations you support. But alone these are not reasons to give. We give because we recognize that all is gift. Nothing (time, talent or treasure) is ours forever. It is held as gift.

And all of it will leave us at some point. Proportional and intentional giving is our opportunity to be proactive in letting go and learning how to enjoy our whole life as holy gift.

The Rev. Dr. Guy J. D. Collins

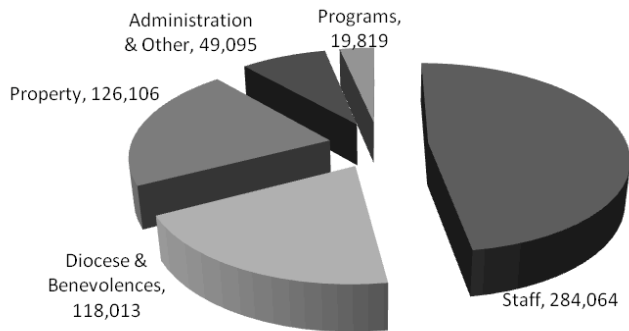
From the Gospel of John we learn that Jesus summarized his teachings in one word—love. Throughout our human lives, we have many different ways to learn about and experience love. In any relationship where love is present, giving is present as well. God's ultimate loving gift of Jesus to the world helps us understand that loving and giving are both parts of the image of God that is in us all.

The Rev. Madelyn L. Betz

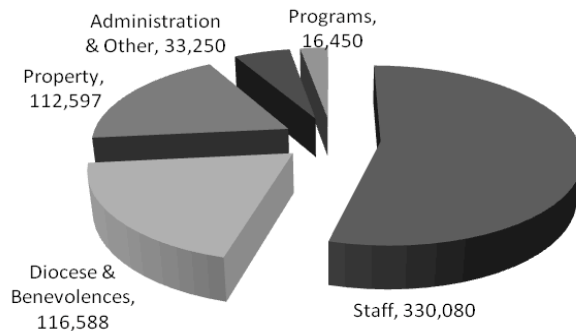
Cost to Operate St. Thomas

Have you ever considered what it costs to operate St. Thomas for one day? The answer: \$1,667. Just under half of that (or \$904/day) funds the clergy and lay staff who support the parish as we carry out our mission. The other half is divided among Diocese & Benevolences (the parish's own direct giving, \$319/day); Property (\$308/day), Administration (\$91/day); and direct Program costs (\$45/day). During 2009 the parish has cut costs by ending two paid positions, the Assistant Chaplain and the Sunday School Coordinator. A third staff position, Assistant Treasurer, will not continue in 2010.

2008 Expenses



2009 Expenses (as projected 10/10/09)

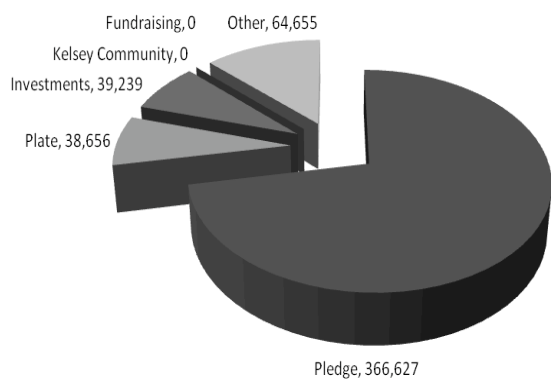


[N.B. 2008 staff expense only included 6 months of the curacy]

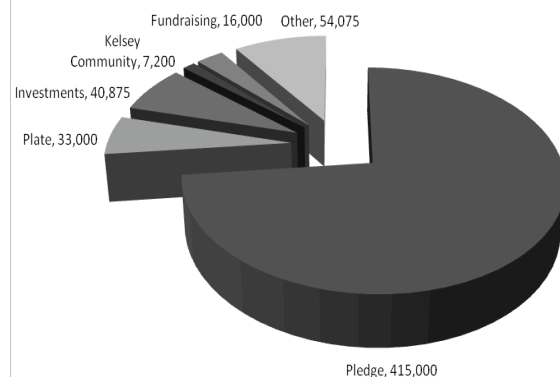
Giving Trends in the New Millennium

In 2008, 175 pledges were made to fund the current 2009 fiscal year. Those pledges totaled \$415,000, an increase of 9.5% over the previous year. If we can continue to cut costs, continue to generate income through fundraising, and continue to increase the parish's pledge giving, St. Thomas will be able to have a balanced budget. An overall increase in pledge income for 2010 of about 5%, about \$20,000, would shrink the operating deficit to under \$10,000, the lowest in recent years. An overall 7% increase, about \$30,000, would eliminate the deficit completely. Can we do it?

2008 Income

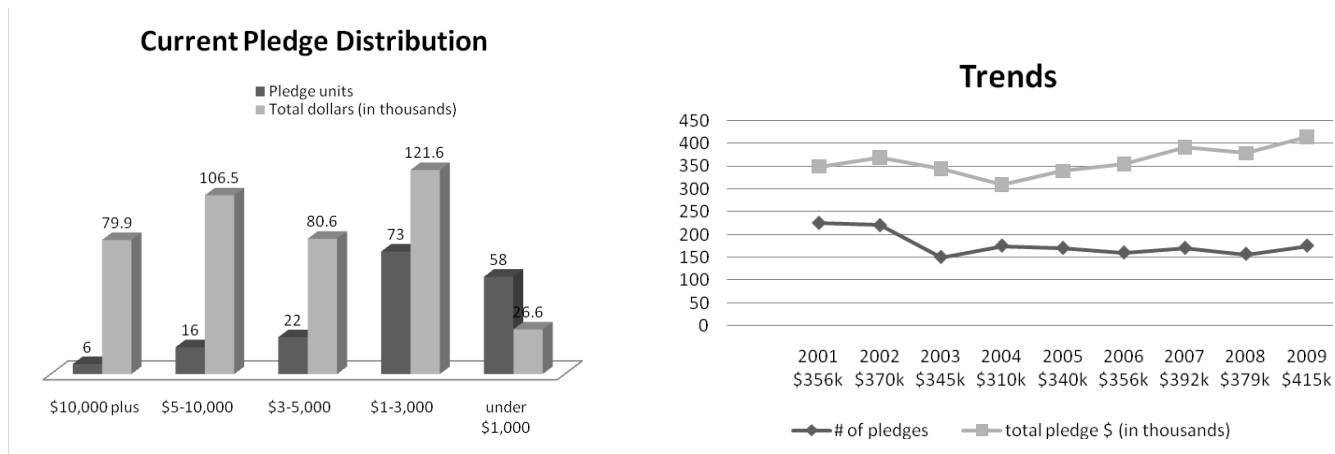


2009 Income (as projected 10/10/09)



Income

The Vestry hopes that intentional giving (pledges) will supply about three-fourths of the parish's projected 2010 income, or \$435,000 out of \$595,000. Additional 2010 income from fundraising (the Jumble Sale, Heaven on Earth, and other projects) and from Kelsey Community rent is estimated to increase above the 2009 figure of \$23,000. Thanks to these projected increases in income, and to careful cost management, we hope to adopt a balanced, deficit-free budget in 2010, for the first time in several years. Proportional giving can help us all move toward that goal.



Growing Toward Proportional Giving

The practice of proportional giving stems from the recognition that all that we have is from God. Out of thankfulness, we give back a portion of what we have been given. The Episcopal Church's General Convention, the church's governing body of lay and clergy delegates, has affirmed the Biblical standard of the tithe (10%). Our Bishop encourages each of us to work toward giving a proportion of our income. Some St. Thomas parishioners do tithe. Using the chart below, figure out what percentage of your income you now give to St. Thomas. We know that you will give prayerful thought to your intent for 2010, and to whether or not you can increase your giving this year. You may be able to add a set dollar amount to your pledge, increase your previous gift by a certain percentage, or increase the proportion of your income that you give.

Proportional Giving

Income	% and Weekly Pledge				
	2%	4%	6%	8%	10%
20K	\$8	\$15	\$23	\$31	\$38
30K	\$12	\$23	\$35	\$46	\$58
40K	\$15	\$31	\$46	\$62	\$77
50K	\$19	\$38	\$58	\$77	\$96
60K	\$23	\$46	\$69	\$92	\$115
70K	\$27	\$54	\$81	\$108	\$135
80K	\$31	\$62	\$92	\$123	\$154
90K	\$35	\$69	\$104	\$138	\$173
100K	\$38	\$77	\$115	\$154	\$192

People of St. Thomas: Personal Reflections

Brian Glenney, teacher to students at Hanover High School, husband to Colleen Boggs, father to Noah

“As an Episcopalian for 24 of my 36 years, I am caught between my doubts and my convictions. I'm here at St. Thomas because I find here what I can't find anywhere else. I'm here with my boy because I want him to learn about living with questions and beliefs, to grow up in a community where he can doubt, listen, make up his own mind, and still believe in wonders that lie beyond rational thought and human measurement. This church provides that environment. I pledge because I need this place, this community, to be here for me, for us.”

Doris Zappala, in her 54th year of worshipping at St. Thomas, where her children and a grandchild have been baptized.

“I found the best way to get to know other parishioners at St. Thomas is to be involved in small groups in the areas that interest one most. As a church we all need to be involved in ways we are most comfortable. Without our financial support St. Thomas Church would not be possible. Stewardship and commitment is vital to the growth of our church and each member's lives.”

While a student at Dartmouth, Carmen Springer '07 was a vestry member and a leader at the Edge. She now serves in the Peace Corps in South Africa, and continues to give to St. Thomas.

“Of all the things my time at St. Thomas and the Edge taught me, the most poignant to me is to critically examine my life . . . my choices and actions can be used either as a tool of oppression or a tool of liberation. I decided to tithe 10% of my Peace Corp Readjustment Allowance, knowing that, after tithing, I don't have enough money to pay my student loan interest. It took me a long time to come to this decision. But, in the end, I found peace with it.”

St. Thomas Church

9 West Wheelock Street
Hanover, NH 03755

Stewardship Committee

Eric Esau and Kelly Seaman, Co-chairs
vEnessa Y. Acham, Tom McFarland,
Sally Redman



Oct 25 9am Joint Service &

Brunch with Susan DeBevoise Wright

Nov 1 In-gathering of intent-to-give cards